

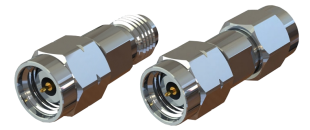


# WA2S

## 2.4mm to SMA

Features:  
\* Low VSWR

Applications:  
\* Wireless  
\* Transmitter  
\* Laboratory Test  
\* Radar



### Electrical

Frequency: DC~26.5GHz  
VSWR: 1.2 max.  
Impedance: 50Ω

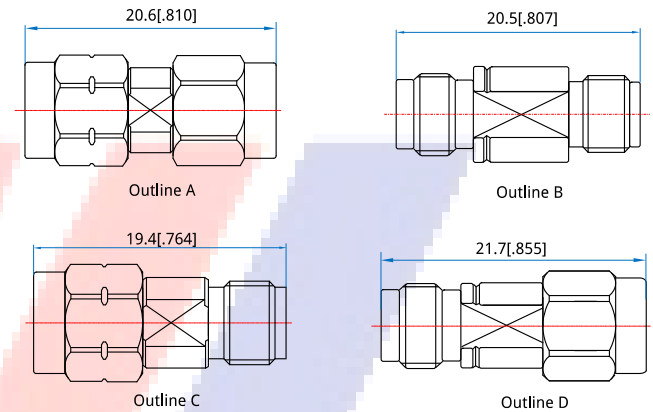
### Mechanical

RF Connectors: 2.4mm SMA  
Mating Life Cycle: 500 cycles  
Outer Conductor: Passivated stainless steel  
Dielectric: PEI&PTFE  
Inner Conductor: Gold plated beryllium copper

### Environmental

Temperature: -55~+165°C

### Outline Drawings



Unit: mm [in]  
Tolerance: ±0.2mm [±0.008in]

### How To Order

- WA2S-MM** - 2.4mm(m) to SMA(m), Outline A
- WA2S-FF** - 2.4mm(f) to SMA(f), Outline B
- WA2S-MF** - 2.4mm(m) to SMA(f), Outline C
- WA2S-FM** - 2.4mm(f) to SMA(m), Outline D

Customization is available upon request.